



# GAT MONTHLY MEMBERSHIP PROGRESS REPORT

Results as of: 6/30/2023

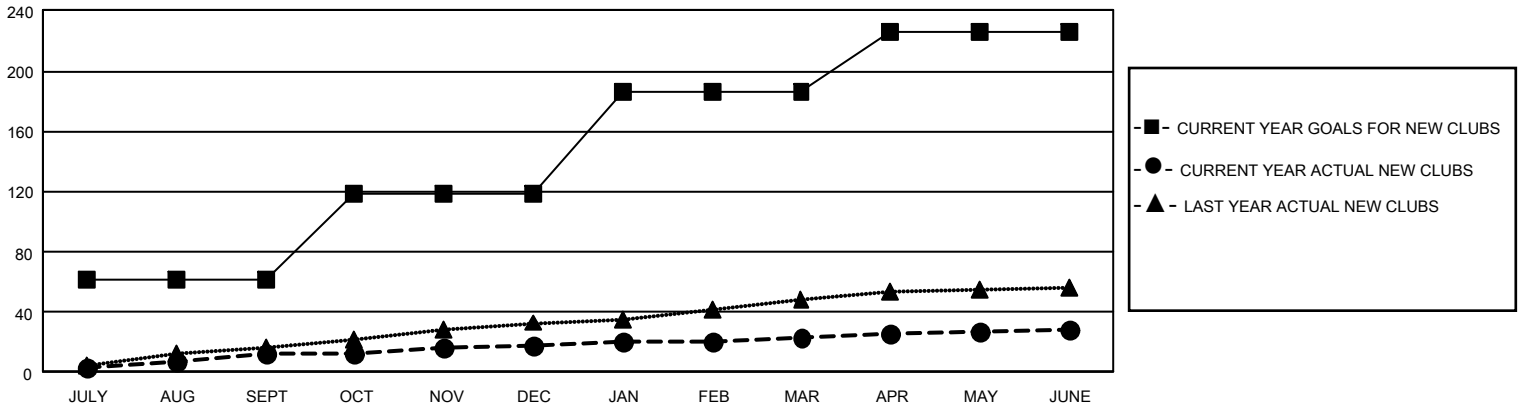
## GAT Constitutional Area 5 - Korea

REPORT DOES NOT INCLUDE CLUBS IN UNDISTRICTED AREAS.

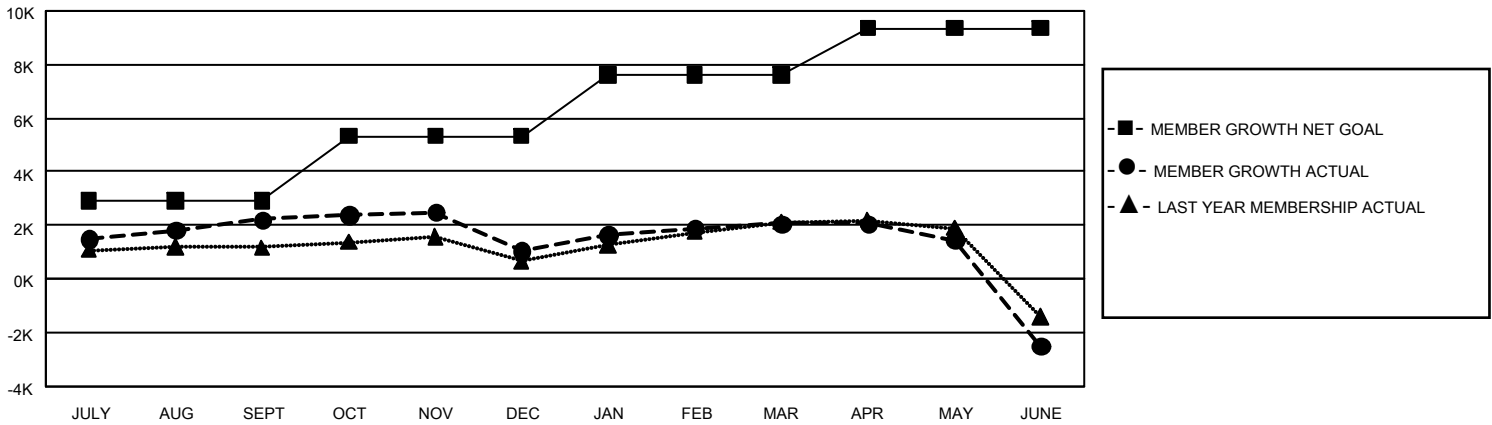
Clubs			
RESULTS FOR 2022-2023			
QUARTER	NEW CLUB GOAL	NEW CLUBS	DROPPED CLUBS
JULY/AUG/SEPT	183	12	12
OCT/NOV/DEC	174	6	16
JAN/FEB/MAR	201	5	8
APR/MAY/JUNE	120	5	29

Members			
RESULTS FOR 2022-2023			
QUARTER	MEMBER GROWTH NET GOAL	MEMBER GROWTH ACTUAL	DROPPED MEMBERS ACTUAL (including transfers)
JULY/AUG/SEPT	2925	4,708	2,305
OCT/NOV/DEC	2400	2,024	3,117
JAN/FEB/MAR	2293	2,552	1,429
APR/MAY/JUNE	1738	1,733	6,172

GOALS AND ACTUAL NEW CLUBS CUMULATIVE



GOALS AND ACTUAL MEMBERS CUMULATIVE



<b>DROPPED CLUBS: 65</b>	1,648 CLUBS OF 2,065 ADDED 1 OR MORE NEW MEMBERS	<b>GENDER DISTRIBUTION</b>	
		MALE 52,150 (74.69%) FEMALE 17,669 (25.31%) NON BINARY 0 (0.00%) PREFER NOT TO ANSWER 0 (0.00%)	
<b>DROPPED MEMBERS</b>		<a href="#">CLICK HERE FOR CUMULATIVE MEMBERSHIP DATA</a>	
DECEASED 274 CLUB CANCELLED 695 OTHER 12,054 <b>TOTAL 13,023</b>		TOTAL FAMILY UNIT MEMBERS 4,241 FAMILY MEMBERS PAYING HALF DUES 2,444	